

Soffianti a Canali Lateral Side Channel Blowers

930

Una Soffiante Economica e con Elevate Performance.



La Soffiante 930, ottime performance a prezzi contenuti.

La Soffiante 930 fa parte della famiglia delle macchine di grande portata. Disponibile con motori da 8,5 kW fino a 18,5 kW con portata di 1650 mch a pressione ambiente. Costruita in alluminio con la tecnologia della pressofusione, progettata per un lavoro a servizio continuo con un livello di rumorosità contenuto.

The 930 Series: Blower with High Performance to Low Cost.

The 930 Series are blowers with big flow rate.

Available with motor power amid 8,5 kW to 18,5 kW moves 1650 mch at environment pressure. Totally built in aluminium with the die-casting technology, the 930 series is designed for an continuous work with low noise.



Contattaci

Hai delle domande o Vuoi una quotazione?

t. 02.48.82.614



Appointment

One of our technician can study with you the solutions for your application.

info@tbf.it

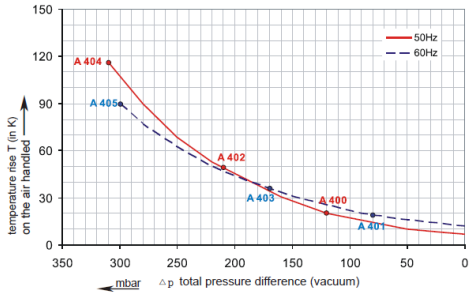
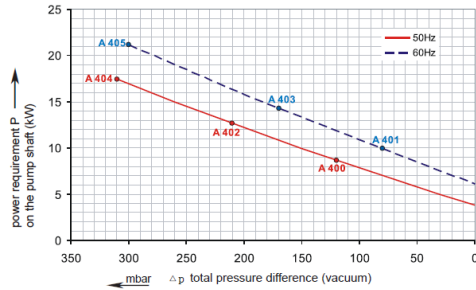
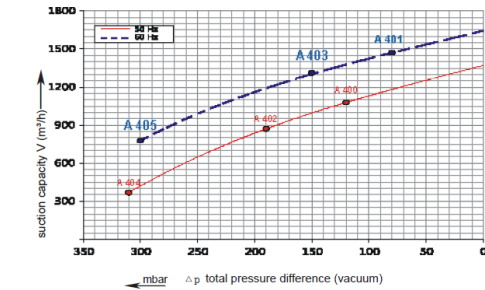
Soffianti a Canali Lateral Side Channel Blowers

930

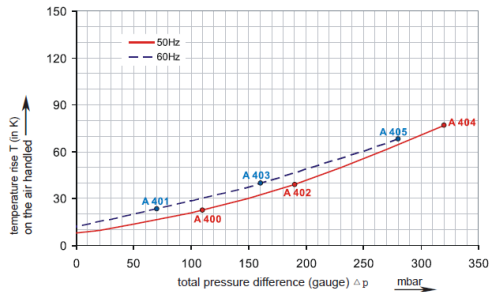
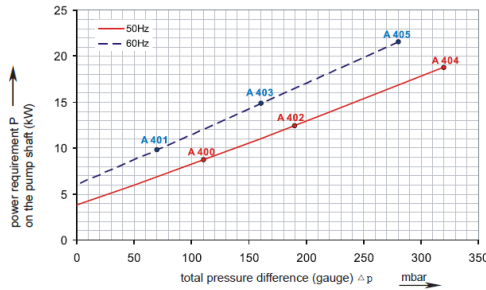
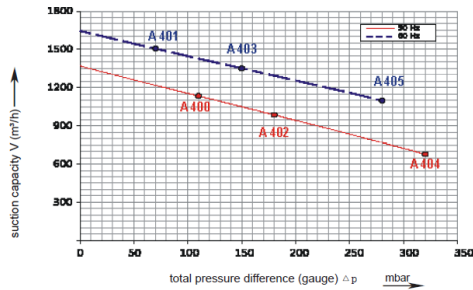
Serie 930 – Informazioni Tecniche 930 Series – Tech Information

Modello	Frequenza	Potenza	Tensione	Assorbimento	Rumorosità	Peso	Curva	Pressione Differenziale
Type	Frequency	Motor Power	Voltage	Rated Current	Noise	Weight	Curve	Differential Pressure
	Hz	kW	V	A	dB(A)	kg		mbar
930.3ph.1st.0850	50	8,5	345-415Δ 600-720Y	18,00Δ 10,50Y	75	98	A400 -120	110
	60	9,8	380-480Δ 660-720Y	18,00Δ 10,50Y	80	98	A401 -80	70
930.3ph.1st.1250	50	12,5	345-415Δ 600-720Y	28,00Δ 16,20Y	75	121	A402 -190	180
	60	14,5	380-480Δ 660-720Y	29,00Δ 16,70Y	80	121	A403 -150	150
930.3ph.1st.1850	50	18,5	345-415Δ 600-720Y	37,00Δ 21,00Y	75	131	A404 -310	320
	60	21,3	380-480Δ 660-720Y	39,00Δ 22,50Y	80	131	A405 -300	280

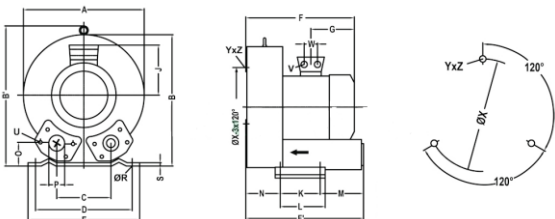
Serie 930 – Performance in Vuoto 930 Series – Vacuum Performance



Serie 930 – Performance in Pressione 930 Series – Pressure Performance



Serie 930 – Ingombri 930 Series - Dimension



Mod.	F'	A	E	B	P
930.3ph.1st.0850	682	550	415	569	G 4"
930.3ph.1st.1250	682	550	415	569	G 4"
930.3ph.1st.1850	682	550	415	569	G 4"